

**KIT PART NUMBER 6231384**

**INSTRUCTIONS FOR INSTALLING A SERVICE LAMP SWITCH IN A 623 SERIES HOT DRINK CENTER**

**CHECK THE PARTS RECEIVED IN THE KIT WITH THE PARTS LIST IN THESE INSTRUCTIONS. IF ANY PARTS ARE MISSING, CONTACT NATIONAL VENDORS' PARTS DEPARTMENT**

Read these instructions carefully before installing the kit.  
Keep these instructions for part numbers and for future reference.

This kit contains the following:

<b>INDEX</b>	<b>PART NUMBER</b>	<b>DESCRIPTION</b>	<b>QUANTITY</b>
1	1211141	Switch	1
2	6239034	Harness	1
3	9984500	Insulator	1
4	6231382	Cover	1
	6231383	Installation instructions	1

**INSTALL THE LAMP SWITCH KIT ACCORDING TO THE FOLLOWING INSTRUCTIONS:**

Refer to Figure 1.

1. Unplug the merchandiser.
2. From the front of the monetary panel, insert the switch (1) as shown.
3. Route the harness (2) through the cover (4).
4. Connect the harness to the top two terminals in the rear of the switch (1) as shown.
5. Place the insulator over the third terminal from the top, as shown.
6. Push against the face of the switch (1) while pressing the cover over the rear of the switch, as shown.
7. Route the harness (2) through the merchandiser as shown.
8. Disconnect the existing wiring harness from the service lamp.
9. Connect the service lamp and existing harness connectors removed in step 8 to harness (2).
10. Turn the service lamp switch ON, and leave it ON.
11. Restore power to the merchandiser, and test for proper service lamp operation.

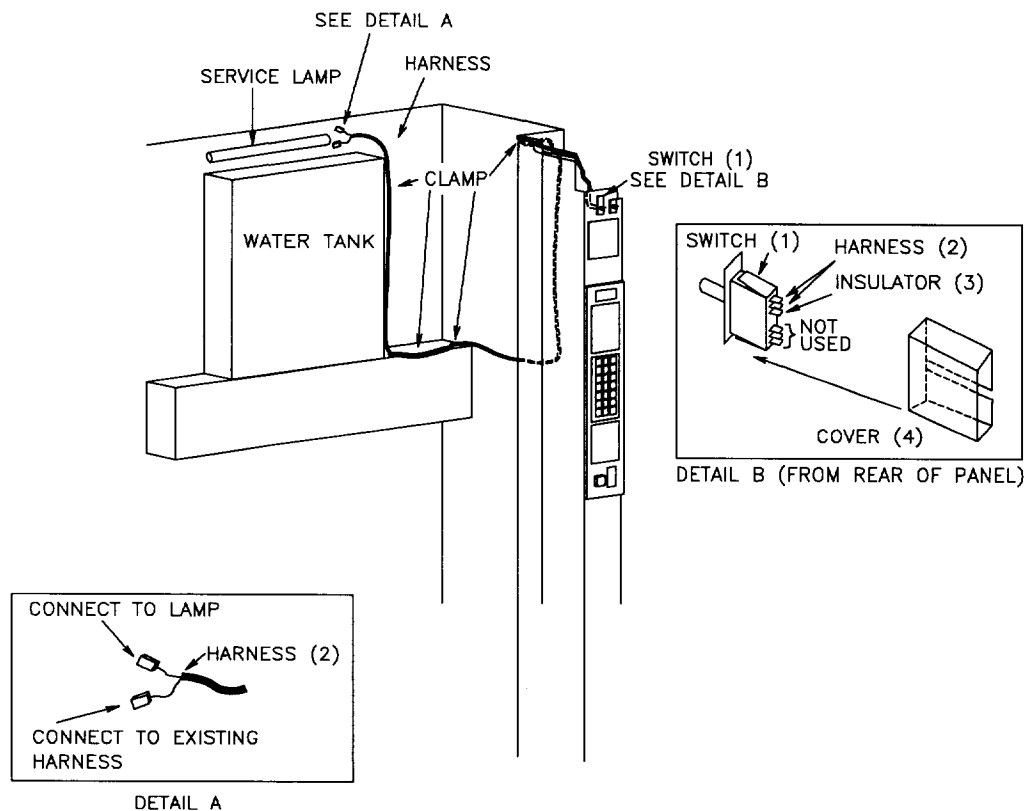


Figure 1.

INSTRUCTIONS FOR INSTALLING A SERVICE LAMP SWITCH IN A 623 SERIES HOT DRINK CENTER

**CHECK THE PARTS RECEIVED IN THE KIT WITH THE PARTS LIST IN THESE INSTRUCTIONS. IF ANY PARTS ARE MISSING, CONTACT NATIONAL VENDORS' PARTS DEPARTMENT**

Read these instructions carefully before installing the kit.  
Keep these instructions for part numbers and for future reference.

This kit contains the following:

INDEX	PART NUMBER	DESCRIPTION	QUANTITY
1	1211141	Switch	1
2	6239034	Harness	1
3	9984500	Insulator	1
4	6231382	Cover	1
	6231383	Installation instructions	1



5      447502      Grommet - 2.00 Long      2

*INSTRUCTIONS TO BE UPDATED  
WHEN NETWORK REQUESTED FOR  
REPRINT.      (RD)      5-12-93*

INSTALL THE LAMP SWITCH KIT ACCORDING TO THE FOLLOWING INSTRUCTIONS:

Refer to Figure 1.

1. Unplug the merchandiser.
2. From the front of the monetary panel, insert the switch (1) as shown.
- 3.4. Route the harness (2) through the cover (4). 5
- 4.5. Connect the harness to the top two terminals in the rear of the switch (1) as shown.
- 5.6. Place the insulator over the third terminal from the top, as shown.
- 6.7. Push against the face of the switch (1) while pressing the cover over the rear of the switch, as shown.
- 7.8. Route the harness (2) through the merchandiser as shown.
- 8.9. Disconnect the existing wiring harness from the service lamp.
- 9.10. Connect the service lamp and existing harness connectors removed in step 8 to harness (2).
- 10.1. Turn the service lamp switch ON, and leave it ON.
- 11.2. Restore power to the merchandiser, and test for proper service lamp operation.

3 Positiv Grommets (4) on Cover (5), as shown.

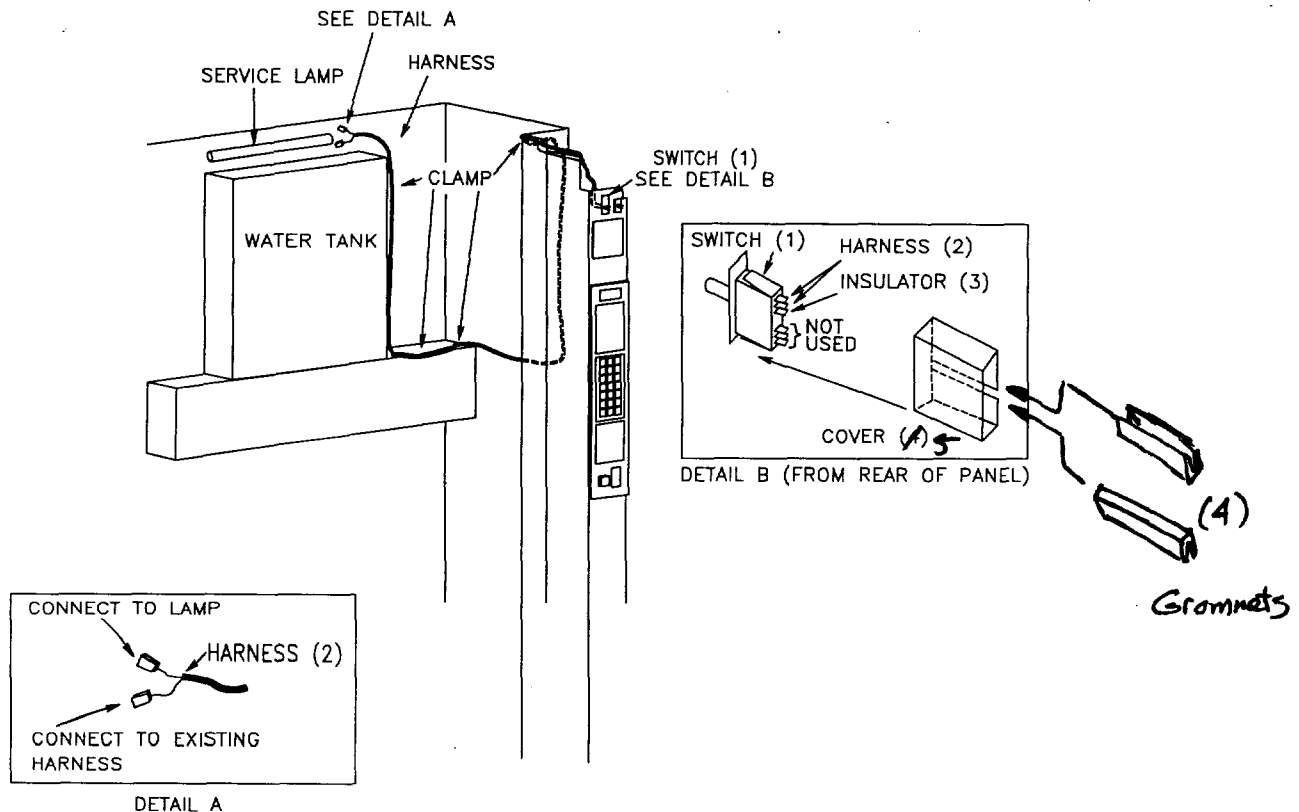
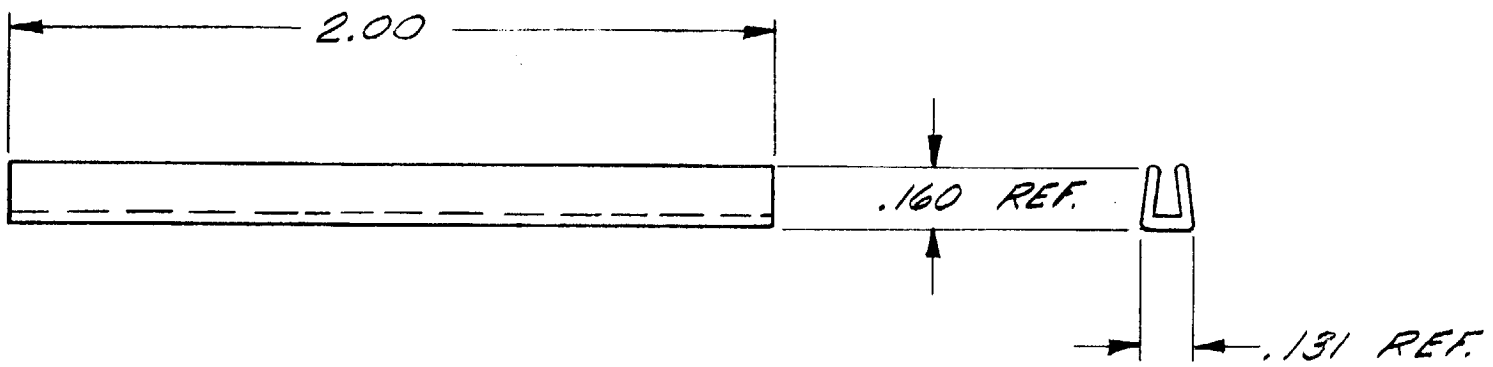


Figure 1.

PART NO. <b>4407502</b>		PART NAME <b>GROMMET - 2.00 LG.</b>		DATE <b>3-6-92</b>
MATERIAL <b>SEE NOTE</b>		FINISH		Drawn by <b>R.L.S.</b>
<b>NATIONAL VENDORS®</b> A DIVISION OF CRANE CO. ST. LOUIS, MO. 63044		TOLERANCES • 2 PLACE DECIMAL ± .02 UNLESS • 3 PLACE DECIMAL ± .005 OTHERWISE • ANGLES ± 1/2° EXCEPT SPECIFIED • FORMED ANGLES ± 1° CONCENTRICITY T.I.R. .010		Checked by <b>JP</b>
		SCALE <b>2=1</b>		Approved by <b>JP</b>

REVISION				
LTR	DESCRIPTION	ECO NO	DATE	Approved by
<b>A</b>	<b>PROJ. 4049 TOOL REL. #22</b>	<b>—</b>	<b>5-7-92</b>	<b>JP</b>

**NOTE:**  
 CUT TO LENGTH FROM  
 N.V. PART NO. 2342076



**NOTE:**  
 PANEL THICKNESS .036 - .062

PART NO. 6231384		PART NAME KIT-SERVICE LIGHT SWITCH		DATE 3-6-92	REVISION				
MATERIAL -----		FINISH -----		Drawn by DM	LTR A	DESCRIPTION ECO NO. 623-310	ECO NO. -	DATE 3-6-92	Approved by RJR
<b>NATIONAL VENDORS®</b> A DIVISION OF CRANE CO. ST. LOUIS, MO. 63044		UNLESS OTHER- WISE SPECIFIED DIMENSIONS ARE IN INCHES		TOLERANCES • 2 PLACE DECIMAL ± 02 UNLESS • 3 PLACE DECIMAL ± 005 OTHERWISE • ANGLES ± 1/2" EXCEPT SPECIFIED • FORMED ANGLES ± 1 CONCENTRICITY T I R 010		SCALE ---		Checked by SA	
								Approved by RJR	

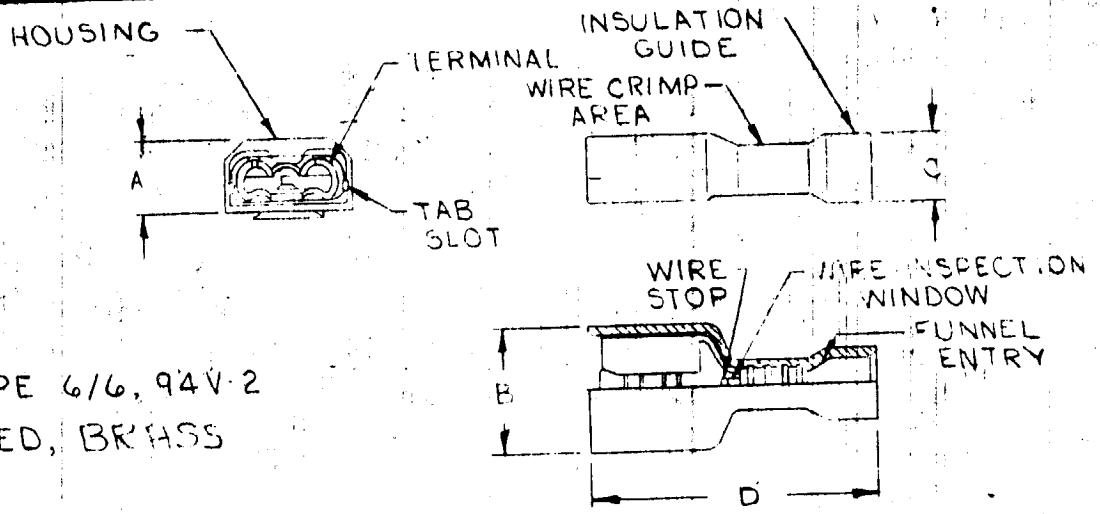
THIS KIT CONSISTS OF THE FOLLOWING:

<u>QUANTITY</u>	<u>PART NO.</u>	<u>DESCRIPTION</u>
1	1211141	SWITCH
1	6231383	INSTRUCTIONS-INSTALLATION-SERVICE LIGHT SWITCH
1	6239034	JUMPER-CAB. LIGHT-DOM.
1	9984500	INSULATOR-.187
1	205170	Cover

ALL SUITABLY PACKAGED PER ORDER.

M-3130

PART NO <b>9984500</b>		PART NAME <b>TERMINAL FEMALE - INSULATED - .187</b>		DATE <b>3-3-80</b>	REVISION				
MATERIAL		FINISH		Drawn by <b>P.Z.</b>	TR <b>A</b>	DESCRIPTION <b>2-520261-2 WAS 2-520153-2</b>	ECO NO <b>M-5222</b>	DATE <b>5-20-81</b>	Approved by <b>P.Z.</b>
<b>NATIONAL VENDORS</b> A DIVISION OF UMC INDUSTRIES, INC. ST. LOUIS, MO. 63115		UNLESS OTHER WISE SPECIFIED DIMENSIONS ARE IN INCHES		TOLERANCES UNLESS OTHERWISE SPECIFIED 2 PLACE DECIMAL : .02 3 PLACE DECIMAL : .005 ANGLES : 1/2° EXCEPT FORMED ANGLES : 1° CONCENTRICITY T Y R .010	SCALE	Checked by <b>P.Z.</b>		Approved by <b>P.Z.</b>	



SUPPLIER  
AMP, INC

MATERIAL:

HOUSING - NYLON TYPE 6/6, 94V-2  
TERMINAL - TIN-PLATED, BRASS

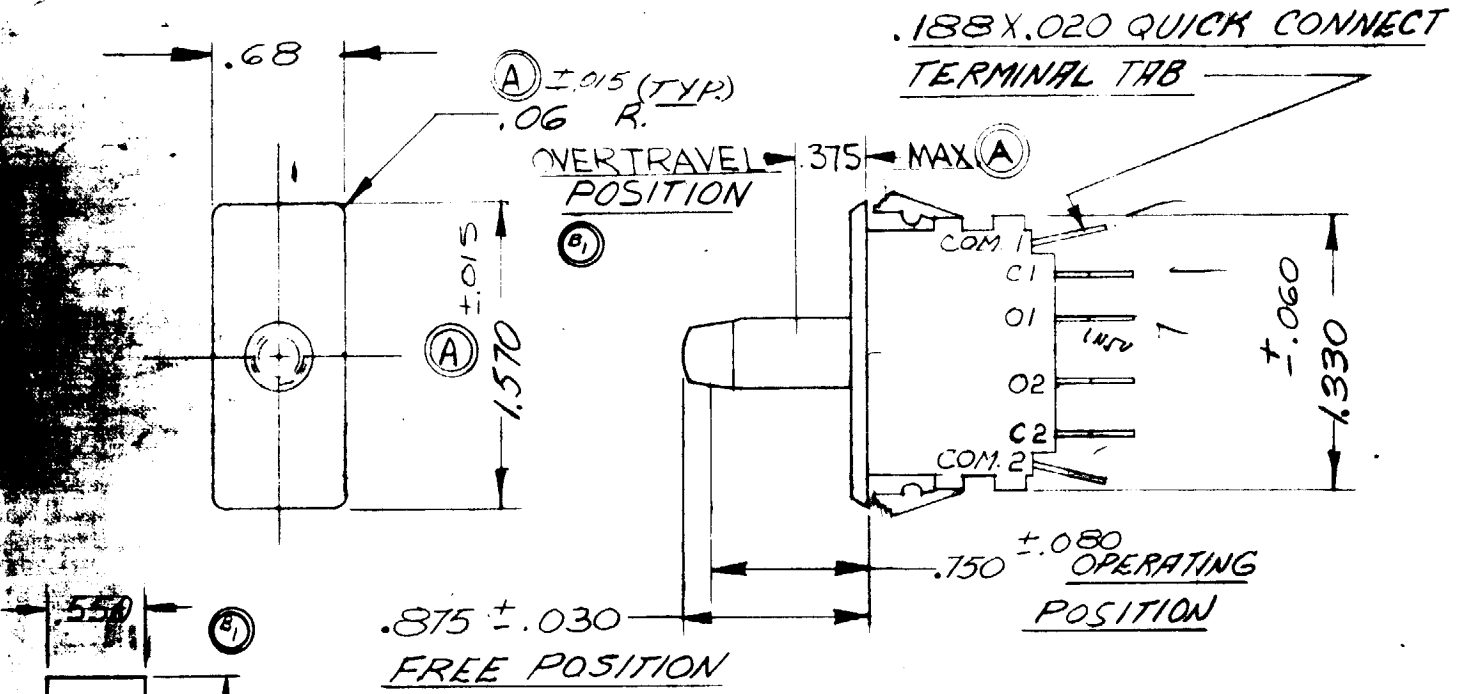
A	B	C	D	COLOR CODE (TRANSLUCENT)	MATING TAB	WIRE RANGE	INS. DIA MAX.	AMP PART NO
.175	.300	.295	.935	RED	.020 X 187	22 X 18	.230	2-520261-2

(A)

**RECEIVED**  
JUN 15 1981  
NATIONAL VENDORS  
PUBLICATION DEPARTMENT  
*W.P.F.*

1141	PART NAME <b>SWITCH</b>	DATE <b>1-3-63</b>	-TOLERANCES- UNLESS OTHERWISE SPECIFIED		DATE <b>7-1-69</b>	REVISION <b>(A) OVERTRAVEL WAS .250 MIN. - NOW .375 MAX. 1.370 ± .015 WAS 1.370 .06 R. ± .015 WAS .06 R.</b>	WPA
PER MACHINE	MATERIAL <b>STANDARD</b>	FINISH <i>~</i>	HEAT TREATMENT <i>~</i>		<b>M-1450</b>	<b>(B) BLK. TOL. REVISED</b>	M.S.
NATIONAL VENDORS, INC. 3055 NATURAL BRIDGE AVE. ST. LOUIS 15, MO.		DRAWN BY <b>SCHIEF</b>	DESIGN CHECKED BY <b>YWH</b>	DRAWING APPROVED BY <b>SM</b>	SCALE <b>FULL</b>	<b>(C) ADDED CHERRY SWITCH E79-00AA ADDED "POSITION" ADDED PANEL HOLE REMOVED 1/3 HP. 125 OR 250 VAC.</b>	M.A.
		CONCENTRICITY T.I.R. .010 DIMENSIONS IN INCHES UNLESS OTHERWISE SPECIFIED DO NOT SCALE		DATE <b>11-14-89</b>			
				EDC-482			

SUPPLIERS  
MICRO SWITCH - CAT. # 2DM4  
CHERRY SWITCH - E79-00AA (B1)



CHARACTERISTICS  
OPERATING FORCE - 24 OZ. MAX.  
RELEASE FORCE - 6 OZ. MIN.  
DIFFERENTIAL TRAVEL - .075 MAX.

UNDERWRITERS LAB INC. LISTED RATING  
10 A - 125 OR 250 VAC.



TEMPORARY A

B

C

D

PART NO. 6239034	PART NAME JUMPER-CAB. LIGHT-DOM.	DATE 2-27-92	REVISION	
			DESCRIPTION ECO NO. 623-310	ECO NO. -
MATERIAL SEE NOTE	FINISH	DRAWN BY FWK	DATE 3-6-92	APPROVED BY RJR
		CHECKED BY		
<small>UNLESS OTHERWISE SPECIFIED DIMENSIONS ARE IN INCHES</small> <small>TOLERANCES UNLESS OTHERWISE SPECIFIED ARE:</small> <small>2 PLACE DECIMAL ± .02</small> <small>3 PLACE DECIMAL ± .005</small> <small>ANGLES ± 1/2° EXCEPT FORMED ANGLES ± 1°</small> <small>OTHERWISE SPECIFIED CONCENTRICITY TIR .010</small> <small>-CAD DRAWING DO NOT REVISE MANUALLY-</small>		SCALE NONE		
<b>CRANE NATIONAL VENDORS</b> <small>ST. LOUIS, MO 63044-1200</small> <small>FILE NAME: 6055JEFF</small>				

4

3

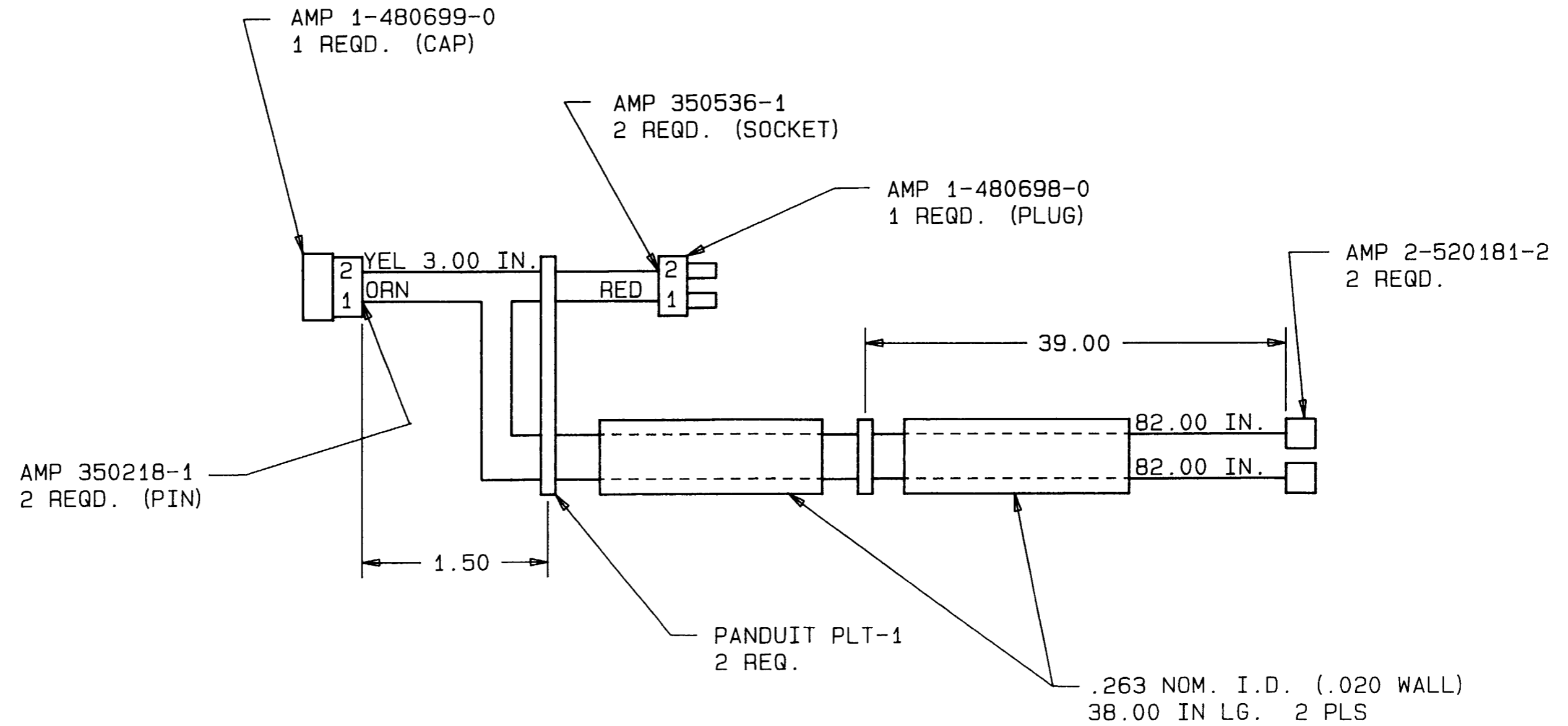
2

1

- NOTES:
- 1.TOLERANCE ± .25 IN.
  - 2.HARNESS TO BE FURNISHED BY A U.L. RECOGNIZED, CSA CERTIFIED SUPPLIER. PACKAGING TO HAVE U.L. & CSA MARKINGS.
  - 3.WIRE MUST BE FREE OF SPLICES, CONTINUOUSLY STRANDED AND TINNED COPPER.
  - 4.SUPPLIERS MUST BE APPROVED BY N.V.
  - 5.HARNESS MUST BE ELECTRONICALLY TESTED 100% FOR POINT TO POINT CONTINUITY (OPENS AND SHORTS) AND CROSSED WIRING.

WIRE COVER NOTES:  
 U.L. 300V VW-1  
 CSA: 300V OFT PVC  
 COLOR: BLACK

WIRE NOTES:  
 20 AWG .031 INS.  
 10 X 30 STRANDED CONDUCTOR  
 U.L. STYLE: 1015  
 CSA TYPE: TEW



A

B

C

D

4

3

2

1